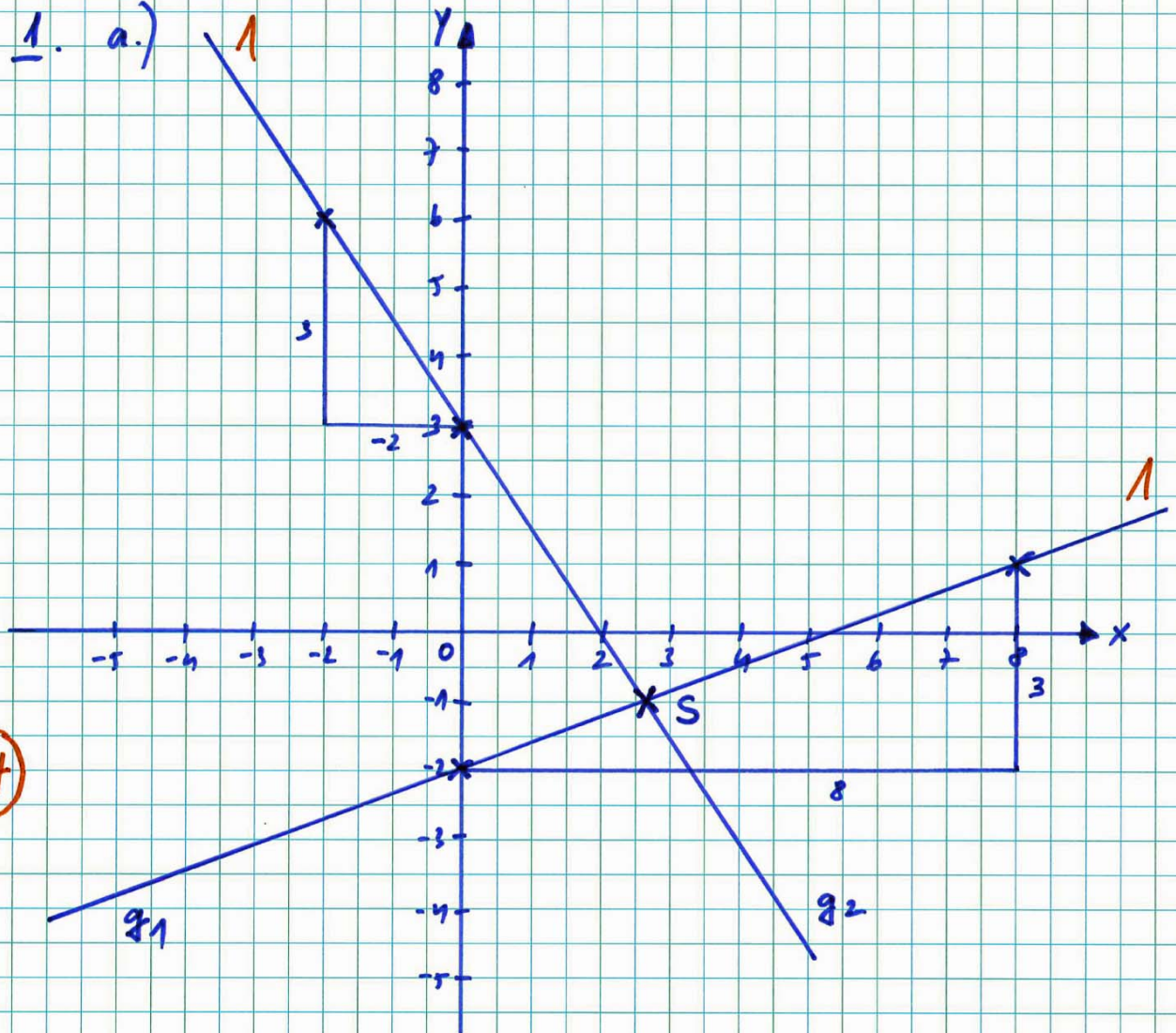


1. a.)



$$\begin{aligned} \text{b.) } \frac{3}{2} \cdot x - 2 &= -\frac{2}{2} \cdot x + 3 && | \cdot 2 \\ 3x - 16 &= -2x + 6 && | +2x \\ 5x - 16 &= 6 && | +16 \\ 5x &= 22 && | : 5 \end{aligned}$$

$$x = \frac{22}{5} = \frac{4.4}{1} \quad |$$

$$y = \frac{3}{2} \cdot \frac{4.4}{1} - 2 = 6.6 - 2 = \underline{4.6} \quad |$$

$$\Rightarrow \underline{\underline{S \left( \frac{4.4}{1} \mid 4.6 \right)}}$$

2. f:  $y = -\frac{6}{5} \cdot x$

$$2 = -\frac{6}{5} \cdot 3 = -\frac{18}{5} = -3,6 \quad (+5,6)$$

$$\Rightarrow \underline{\underline{y = -\frac{6}{5} \cdot x + 5,6}} \quad 1$$

(2)

g:  $y = \frac{4}{3} \cdot x$

$$6 = \frac{4}{3} \cdot 2 = 2\frac{2}{3} \quad (+3\frac{1}{3})$$

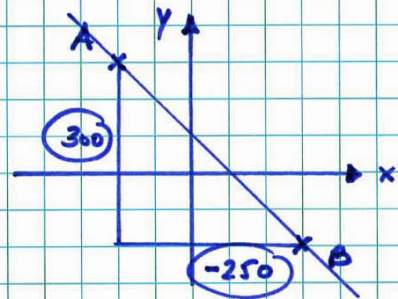
$$\Rightarrow \underline{\underline{y = \frac{4}{3} \cdot x + 3\frac{1}{3}}} \quad 1$$

3.  $y = -\frac{6}{5} \cdot x$

$$182 = -\frac{6}{5} \cdot (-116) \\ = 139,2 \quad (+42,8)$$

(2)

$$\Rightarrow \underline{\underline{y = -\frac{6}{5} \cdot x + 42,8}} \quad 2$$



$$\text{Steigung: } -\frac{300}{250} = -\frac{6}{5}$$

4.  $0 = \frac{7}{18} \cdot x - 12,6 \quad | +12,6$

$$12,6 = \frac{7}{18} \cdot x \quad | \cdot \frac{18}{7}$$

(2)

$$\underline{\underline{32,4 = x}}$$

$$\Rightarrow \underline{\underline{P(32,4 / 0)}} \quad 2$$

15.

$$g: y = \frac{3}{4} \cdot x$$

$$12 = \frac{3}{4} \cdot 6 = 4,5 \quad (+ 7,5)$$

$$\Rightarrow \underline{y = \frac{3}{4} \cdot x + 7,5}$$

2

$$h: y = -\frac{2}{3} \cdot x$$

$$12 = -\frac{2}{3} \cdot 6 = -4 \quad (+ 16)$$

$$\Rightarrow \underline{y = -\frac{2}{3} \cdot x + 16}$$

$$\Rightarrow 16 - 7,5 = \underline{\underline{8,5}} \quad 2$$

12 Pkte